

# Greater Atlanta ASC

www.gaasc.org

Aussie News

November / December 2005

## Congratulations to GAASC's Own 2005 ASCA Finalists!

Obedience	Obedience	Obedience	Conformation Invitational
Renee Reschenthaler & Husker	Marie Arp & Precious and Gem	Sharon Willis & Beau	Renee Reschenthaler & Maddie
 <p><b>SVCH SPCH WTCH CH Hardrock Willobrook DirectHit UD RTDs GS-E JS-E RS-E DNA-CP 2nd in the Utility Obedience Finals</b></p>	<p><b>Precious, OTCH Jeb's Precious Lady UDX 3rd Open Obedience Finals</b></p> <p><b>&amp;</b></p> <p><b>Gem CH Sunfire's Indigo Diamond CDX 9th Open Obedience Finals</b></p>	 <p><b>Ch. Hamilton Willowbrook Bow N Arrow, CDX 8th in the Open Finals</b></p>	 <p><b>WTCH ALT-CH Hardrock Willobrook MsMemphis CD RTDs GS-N JS-N RS-N 3rd in the Altered Crystal Jubilee Conformation Invitational</b></p>

Aussie News is the official publication of the Greater Atlanta ASC and is published six times a year: January/February, March/April, May/June, July/August, September/October, and November/December. Ads, Brags, Photo of the month, Letters to the Editor, etc. are due to the editor by the 15<sup>th</sup> of the month prior to the publication date. Mail to: Wendy Eldredge, 155 Reynolds St., Marietta, GA 30064, 770-429-9103, eldredge@bellsouth.net (emailed items should be in MSWord or Corel Word Perfect, photos should be in JPG or GIF format) Make checks payable to GAASC and send to the above address.

Advertising Rates:

Full Page ...\$10

Half Page ... \$5

Breeders Directory \$5/6 issues

**Brags are Free**

# President's Message

Dear GAASC members,

Whew! It's over—Nationals that is. And, it was fun! We had a great team who ensured the show was a success for our competitors and GAASC.

I'd like to extend a special thanks to everyone for their hard work making this happen. Thank you to all our members new and existing for their contributions. Your talents and skills came together brilliantly. Here are a few of the comments that I heard directly:

- ✦ GAASC has done it again!
- ✦ This year's banquet was the best I've ever attended
- ✦ You guys always do such a great job ☺
- ✦ Thanks for hosting Nationals—we had so much fun
- ✦ When are you doing this again? (To this comment I said Yikes!)

Seriously, we had a wonderful team pulling together to make the 2005 ASCA Nationals a success! Kudos to you all!!!

*Now, what?*

It's time to look forward to 2006 and GAASC's slate of officers and BoD members. As always, we will have fresh ideas and new folks stepping into new roles. I look forward to seeing each of you at the Christmas party, when we will begin to set GAASC's direction for next year. GAASC is now and will remain one of ASCA's premier affiliate clubs.

*Looking forward to great things!*

Happy Holidays!

## **On the record...**

Wow! Now, you'll be receiving poker chips for volunteer hours! You no longer need complete the required You Deserve the Credit form.

*How does it work?* Each event chairperson will have a supply of poker chips to distribute to the volunteers at each event. There are 2-hour, 4-hour, and 8-hour chips. You collect your chips throughout the year (don't lose them; they won't be replaced) and turn them in at the end of the year to claim your prize! You let us know that the forms are cumbersome, and we've listened.

Remember—You Deserve the Credit!

**Hint:** Look for a new yearend awards program for 2006. We're putting together the details now. Let Renee or me know if you have ideas for this program.



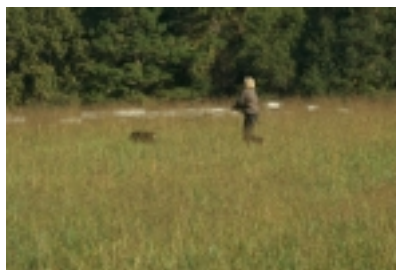
# IT'S A SUCCESS!

The Greater Atlanta Australian Shepherd Club wishes to thank all of our members, friends, and volunteers who helped to make the 2005 ASCA National Specialty such a huge success.

It wouldn't have happened without you!



**'it's all about the loot'**



**'it's all about the training'**



**'it's all about the stock'**



**'it's all about the competition'**



**'it's all about the pride'**



**'it's all about the teamwork'**



**'it's all about the fun!'**



**'it's all about the future'**



**'it's all about the AUSSIE!'**

## LETTER FROM THE EDITOR

As I work on the November/December issue of the GAASC Aussie News I realize that not only is this issue the final one for 2005, it is also the final issue I will produce as secretary/editor.

When I took on the task of Secretary & Newsletter Editor in January 2000 we were getting ready to host the 2000 Nationals. Now, with our second ASCA National Specialty behind us, it seems appropriate to put this publication into other hands.

In the time I have served as your editor, our club has successfully hosted shows and trials too numerous to count. We've grown in membership and stature and have, in my opinion, become a shining example of how an ASCA Affiliate should conduct itself. We have supported each other as members, as volunteers, as individuals, and as friends. But most importantly, we have supported our club and our chosen breed.

I hope you have enjoyed your *Aussie News* during this time, and that you have found the information in each issue helpful, educational, and informative. Thank you for allowing me the opportunity and privilege to be your secretary and editor for the past six years.

Wendy Eldredge



## **'Target'**

**HOF O.T.C.H. CH. Willowbrook Sankano Bull's-eye**

**Nov. 18, 1993 to Nov 18, 2005**



**God saw he was getting tired,  
and a cure was not to be,  
So He put His arms around him,  
and whispered, "Come with Me."  
Although we loved him dearly,  
We could not make him stay,  
A golden heart stopped beating,  
playful paws were put to rest.  
God broke our hearts to prove to us,  
He only takes the best.**

**Anonymous**

**Target died Friday, November 18, on his twelfth birthday.  
He was from our first litter that we bred, and what a dog he has been.  
He will forever live in our hearts.**

**Sharon and Joe Willis**

## **GAASC UPCOMING EVENTS**

**December 11, 2005**

### **Annual Holiday Party**

**December 11<sup>th</sup>, 2005**

**5 pm at the home of**

**Renee and Gill Reschenthaler**

**5793 Rollingwood Dr, Stone Mountain**

**please call Renee at (770) 931-4270 to RSVP**

**January 20-22, 2006**

### **Obedience Marathon & Conformation Shows**

**AOC Training Center, Lilburn, GA**

**Obedience Judges: TBD**

**Conformation Judges: TBD**

**Information on these and all GAASC events can be found at <http://gaasc.org>**

**Volunteers are always welcome!**

# The Health Corner

This ends a multipart series on Canine Reproduction  
Reprinted with permission of author

Pamela A. Davol, Swansea, MA

## Part 4. Reproduction and the Male Dog

### Normal Reproductive Development of the Dog (Male)

All embryos of mammals are programmed to become female. The presence of a single gene on the Y chromosome, however, will induce the development of the testes in an embryo destined to become male. Testis development is a critical part of male differentiation because this organ will secrete two substances required for the normal development of the male reproductive tract: mullerian inhibiting substance (MIS), which causes the mullerian ducts that would develop into the female organs of reproduction to regress; and testosterone, the male hormone that will stimulate the male organs of reproduction to develop from the wolffian ducts. Conversion of testosterone to dihydrotestosterone will induce development of the prostate gland, the male urethra, the penis, and the scrotum. Subsequently, the testes descend into the scrotum and complete the development of the male reproductive system. Additional effects of testosterone will include the induction of other physical gender characteristics as well as male behavioral traits including mating drive and urine-marking of territory.

The male dog has two testes that are separated by connective tissue within the scrotum. Development of the spermatozoa (male germ cells) takes place in each testis. In the scrotum, a complex blood supply network and specialized muscular tissue maintains the temperature of the blood supplying the testes below normal body temperature. This facilitates optimal development (spermatogenesis) of the spermatozoa. At the onset of puberty, increased levels of lutenizing hormone (LH; a pituitary gonadotroph) induce the testes to produce testosterone, which will lead to the maturation of the spermatozoa. Once mature, the spermatozoa migrate from the testes to the epididymis (a compartment attached to each testis) where they are stored. One end of the epididymis tapers into the ductus deferens, the tube through which the mature sperm that are stored in the epididymis will pass to leave the scrotum. The ductus deferens leads into the prostatic urethra. During ejaculation, the sperm will be drawn out of the epididymis through the ductus deferens and will combine with semen, secreted by the prostate gland, in the prostatic urethra before being expelled.

### Evaluation of a Male's Soundness for Breeding

Successful breeding on the part of the male is dependent upon 1) his physical ability to copulate, 2) his drive to copulate (i.e. his libido), and 3) his ability to produce a normal semen sample. If any of these factors is compromised, then the likelihood of successful conception within the bitch may be greatly diminished or completely inhibited.

From a physical standpoint, proper nutrition and conditioning (exercise) are essential for assuring optimal performance and fertility in the male. Additionally, since breed-specific genetic disorders may not only impact upon the quality-of-life of future offspring but also compromise breeding performance of the male, males intended for breeding should receive a thorough physical examination to evaluate orthopedic, neurologic, endocrinologic, and genital systems prior to breeding.

In regard to semen quality, optimum fertility is not necessarily a factor of age of the dog, but appears to be more dependent on the stage of the sperm within the ejaculate (i.e. immature or aged sperm) or induced morphologic changes that occur in the sperm. Quality of the semen, therefore, is often more affected by factors other than age including degree of arousal, frequency of ejaculation, collection technique and sample handling. Since frequent ejaculation (daily collection of semen for 5 to 7 days) can cause a reduction in sperm output, studs in high demand may experience less than optimal fertility at certain times throughout their reproductive years. For this reason, it is recommended that sperm from valuable studs be collected and cryopreserved in sufficient quantities early in the male's career to ensure future availability. To this end, collection of semen on an "every other day" basis typically allows time for replenishment of sperm reserves.

## **Sperm Production in the Normal Male**

In the normal reproductive male, sperm production is directly related to testicular size. Sperm are stored in the extragonadal compartments of the epididymis and the ductus deferens. The amount of reserved sperm will depend on the frequency and interludes between ejaculations. Total sperm counts in a sexually rested male encompass sperm reserves plus daily sperm produced by the testes. Sperm reserves are reportedly depleted by once per day ejaculation for 5 to 7 days. Therefore, once reserves are depleted, total sperm number will be represented only by the daily production of sperm by the testes.

## **Collection of Semen for Artificial Insemination**

Synbiotics of Malvern, PA and International Canine Semen Bank of Sandy, OR manufacture equipment for the collection of semen. Typically, the device consists of a rubber collecting cone attached to a plastic centrifuge tube. Collection equipment should be sterile or disinfected prior to use. It is important to note that certain external factors such as temperature extremes, exposure to lubricants, and chemicals found in latex and plastic containers that may be used for sperm collection can adversely affect sperm and/or sperm motility. Therefore, stud owners who utilize homemade devices for semen collection should ensure that the materials used have no toxic side effects on spermatozoa; this also applies to methods for disinfecting the equipment.

At the time of collection, the male is introduced to a teaser bitch, either one in estrus or one in anestrus that has been treated with a topical pheromone (Eau d'Estrus by Synbiotics, Malvern, PA) and is allowed to sniff at the vulva. The individual doing the semen collection begins by providing manual stimulation to the penis, using brisk massage, through the prepuce (the outer fur-covered sheath). Once erection occurs, the prepuce retracts, at which point the collector can place the rubber collecting cone with attached tube over the enlarged penis. When the rubber collecting cone is in place, the collector should then tightly encircle the penis and collecting cone with the fingers to simulate the vulvar constriction of the bitch that occurs during the natural "tie."

The dog will ejaculate the semen in three fractions. The first fraction is the presperm fraction, which is a small volume of clear fluid. The second fraction is a cloudy, sperm-rich fraction. During ejaculation of this second fraction, the dog will usually thrust vigorously. Prior to ejaculating the third fraction, which consists of clear prostatic fluid, the dog will usually dismount and attempt to step over the arm of the collector. If the semen collected is to be stored rather than used for immediate insemination, it is important that the collector remove the tube containing the first two fractions prior to ejaculation of the prostatic fluid fraction. Prostatic fluid has been found to lead to a decrease in sperm motility if the spermatozoa are allowed to incubate with the prostatic fluid for any length of time prior to

insemination. If insemination is to be performed immediately, the prostatic fluid may be collected with the first two fractions to yield a total semen volume that will be sufficient for insemination. For complete assessment of male reproductive function, however, it is often advisable to collect the prostatic fluid separately for the purpose of performing routine culture.

When collection is complete, the rubber cone is gently removed from the penis. The dog should be monitored to ensure that the erect penis undergoes normal regression and returns to enclosure within the prepuce.

### **Handling and Evaluation of Semen**

As with all body fluids, semen should be handled as a potentially biohazardous material. Many bacterial organisms that infect dogs may be transmitted to humans during collection of semen and therefore, semen presents a potential health risk. Accordingly, it is essential that the individual collecting and evaluating the semen practice basic "universal precautions" by considering the semen as potentially infectious and taking reasonable steps to reduce risks of infection (i.e. utilizing protective equipment such as gloves and eye goggles, frequent handwashing, proper disinfection or disposal of all contaminated equipment as biohazardous).

For evaluation of semen, the collection is divided into two parts: T1- consists of the presperm and sperm-rich fraction; and T2- consists of the prostatic fluid fraction.

In addition to the above, sediments from the T1 and T2 fractions should be examined for the presence of red blood cells, inflammatory cells, epithelial cells or bacteria which may indicate asymptomatic disorders of the male reproductive system. Semen cultures to identify bacteria are often difficult to interpret because of the numerous microorganisms that normally inhabit urethra and prepuce.

However, significant numbers of bacteria in the sample may indicate presence of an infection.

Additionally, prostatic fluid cultures may be helpful for identifying organisms associated with prostatitis or prostatic dysfunction. (*Additional tests for evaluation of male reproductive dysfunction will be discussed in Part 5.*)

Only samples assessed as normal by the above criteria should be used for insemination or stored for later insemination. Semen that is not used immediately for artificial insemination should be diluted with an extender that nourishes and protects the spermatozoa, chilled, and used within 24 hours. Long term storage of semen requires dilution with an extender containing a cryoprotectant and storage in liquid nitrogen.



# *Brag & Congrats*

## *From Debbie & Gary Anderson at Cedar Glen*

"Allie" Koala-T's Girls Night Out was RWB at the FASA Pre-Show and won the Am Bred Class at Nationals.  
"Magnum" - Cedar Glen's Private Eye was 4th in both the Sunshine ASC and ASTASA Pre-Shows from the Bred-By Class

## *From Joe and Sharon Willis at Willobrook*



1) CH. Blue Isle Fire on Fayblehill, "Fire", owned by Sharon and Joe Willis was High In Trial and High Scoring Champion at the National Specialty.  
Fire also made the cut in Breed on Saturday.

2) CH. Hamilton Willobrook Bow N Arrow, CDX, "Bo", was 8th in the Open Finals.  
Bo is owned by Sharon and Joe Willis.

## *From Amy Burnette at Coomoor Australian Shepherds*

I'm so proud of my girls' accomplishments during the week of the 2005 ASCA Nationals!

### Coolmoor Hardrock In UR Dreams (Cozy)

- 1st Place Bred by Exhibitor Bitch--SSASC; Sunday Miles
- Best Bred by Exhibitor (over the BBX dog)--SSASC; Sunday Miles
  - 1st Brace--SSASC; David Clayton
  - 4th Brace--GAASC; Gail Karamelegos
- Gefion's Stop The Presses (Scandal)
  - 4th 12-18 Bitch--ASCNE; Liz Gibson
- 4th Puppy Sweeps--VSASC; Heather Herron

Thank you to Renee Reschenthaler and Bobbie Moran for allowing me to handle their spectacular bitches to these impressive wins.

## WTCH ALT-CH Hardrock Willobrook MsMemphis CD RTDcs GS-N JS-N RS-N Therapy Dog (Maddie owned by Renee Reschenthaler)

- 3rd 2005 Crystal Jubilee Conformational Invitational--GAASC; Andrea Blizzard, Beth Alden, and Sharon Rowe

### ALT-CH Crosscreek's Lady Abigail (Abby owned by Bobbie Moran)

- Premier--ASCNE; Ginger Abbott



**NiteStar Australian Shepherds**  
**Bred for titles at both ends of their names**  
[www.nitestar.net](http://www.nitestar.net)

Trisha Herring  
698 Vinson Road  
Fort Valley GA 31030-7212  
Home 478-825-2384  
loveaussie@nitestar.net



*Rocky & Ali*

*Paid advertisements*  
**Woods End Productions Inc.**  
**includes**

**Woods End Farm**

HOME OF WTCH HAMILTON'S COWBOY BOOTS

&

*WOODS END BUD*



**Woods End Fence  
Company**  
Custom built dog kennels,  
farm fencing  
and decorative fencing

**Doyle Ivie**  
2221 Salem Road  
Watkinsville, GA 30677  
706-769-5817  
[www.woodsstockdogs.com](http://www.woodsstockdogs.com)

**Woods End Stockdogs**  
Lessons, training and sales  
Livestock contractor,  
herding trial arena